



Imperial Avenue  
Wrenthorpe  
Wakefield  
WF2 0LW

Telephone: 01924 378001

Headteacher: Mrs Lauren Penny

Email: [wrenthorpeoffice@watertonacademytrust.org](mailto:wrenthorpeoffice@watertonacademytrust.org)

website: [www.wrenthorpeacademy.co.uk](http://www.wrenthorpeacademy.co.uk) Twitter/X @Wrenthorpe\_SCH

# Wrenthorpe Academy Weekly Newsletter

22.11.2024







## Team Points

Children who show excellent learning behaviours in lessons and follow our behaviour expectations are awarded team points. To be awarded a point, the children have to be in the right place, at the right time and doing the right thing. Class team points are then added together for our overall weekly team winner.

These are the points that have been awarded in each team this week:

Nicola Adams	Bukayo Saka	Jessica Ennis-Hill	Rob Burrow
1181	1018	1076	997

The house that has won the overall points for this week is: Nicola Adams!



## Whole School Attendance

This week: 96.6% - AMAZING!

Our attendance target for the year is 97%

Year to date 96.4%

### Class Attendance Winners this week:

1<sup>st</sup> place - 1C - 99.14! Well done!

2<sup>nd</sup> place - 3/4R 98.75%

3<sup>rd</sup> place - 1/2P 98.21%

There are **190** days in a school year which leaves **175** days to spend on family time, shopping, appointments and other things.



# ATTENDANCE

## WHY IS IT IMPORTANT?

### ABSENCE FROM SCHOOL

Children are required by law to attend school 190 days per year. The Government states that every pupil's attendance should be at least 95%.

How do YOU measure up?

Attendance	Days	Weeks	Lessons
	Absent	Absent	Missed
95%	9 Days	2 Weeks	50 Lessons
90%	19 Days	4 Weeks	100 Lessons
85%	29 Days	6 Weeks	150 Lessons
80%	38 Days	8 Weeks	200 Lessons
75%	48 Days	10 Weeks	250 Lessons
70%	57 Days	11.5 Weeks	290 Lessons
65%	67 Days	13.5 Weeks	340 Lessons

**89% & Below**  
Drastic effect on academic achievement

**95%-90%**  
Cause for concern

**100%-96%**  
Excellent



# Safeguarding

If you ever feel unsafe safe yourself or are worried about another pupil, it's important that you speak to a member of staff.

Our DSLs are:

Mrs Penny (Headteacher)  
Mrs Williams (Deputy Headteacher)  
Miss Harrison (SEND/CO/Learning Mentor)

***If you are worried a child is at risk of immediate harm, contact Social Care Direct on 0345 8503503***

Alternatively, you can call the police on 101 for non-urgent matters or 999 for urgent matters.

The NSPCC helpline can also offer support on 0808 800 5000.



[1:1 chat - Parent Talk \(actionforchildren.org.uk\)](https://www.actionforchildren.org.uk) - Free and confidential live chat (various times morning to evening) with a parenting coach to offer information, advice and guidance regarding family life, caring for children or managing parental wellbeing.

[Speak to someone - Family Action \(family-action.org.uk\)](https://www.family-action.org.uk) - Emotional support and parental guidance to address complex family pressures and issues via telephone, text, web chat or email. Long term and short-term support available 9am to 9pm Monday to Friday.

[Leeds Survivor-Led Crisis Service » West Yorkshire Night OWLS Helpline \(lslcs.org.uk\)](https://www.lslcs.org.uk) - A new West Yorkshire based overnight listening service for children, young people, and their parents/carers experiencing mental health; call, text or chat.

[Live Well Wakefield](https://www.live-well-wakefield.org.uk) - Live Well Wakefield offers support for people aged 18+ years who are facing non-clinical challenges such as; bereavement, aids & adaptations, education, assistive technology, mobility, social isolation, lifestyle advice, loneliness, long term conditions, home support, personal safety, mental health, housing finances and employment advocacy services.

[YoungMinds | Mental Health Charity For Children And Young People | YoungMinds](https://www.youngminds.org.uk) - provides mental health support for both children and adults



**YOUNGMINDS**

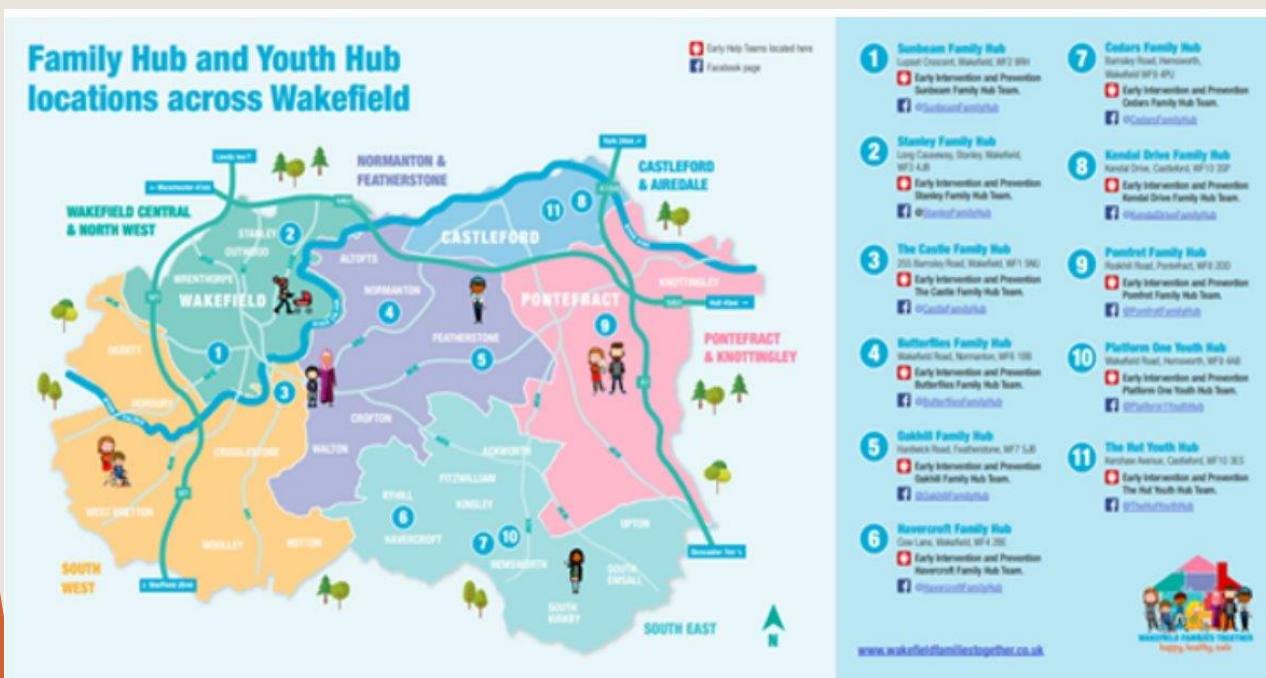


# Wellbeing

## Wakefield Families Together

Wakefield Families Together brings services together, so that it's easier for you to find and access the support you need, at the earliest opportunity.

You can access this support through your child's school, family hub, or in the local community. You can find your local Family Hub or Youth on the Wakefield Families Together website here: [Family Hubs - Wakefield Families Together](#) and here: [Youth Hubs - Wakefield Families Together](#)



Everyone needs help and support at some point in their life. So, when you do and find it hard to deal with a difficult situation, or have worries around family relationships, behaviour, school attendance, emotional and mental health, domestic abuse, parental conflict, housing issues, or employment and debt problems, Family Hubs can help direct to the right people and services.

Sometimes the concerns you have may need a group of professionals to come together to build a package of support with you and other family members so that we have the right expertise to help the whole family. Find out more about the Team Around the School model here: [The 'Team Around' approach - Wakefield Families Together](#)

# This Week's Special Mentions...

2C: Chloe B

5/6M: Reuben S

5/6P: Holly T

RS: Lottie W

5/6MC: Lyla Hill

1/2P: Millie MR

3/4R: Ben R

3/4C: Ivy O

1C: Amelia B

RB: Jack F

3/4PW: Olly B

## Up and Coming Key Dates

Date	
25.11.2024	4:00pm Reception Open Evening
26.11.2024	Reception/KS1 Pupil Progress Meetings
27.11.2024	KS2 Pupil Progress Meetings
09.12.2024	9:30am & 2:00pm LKS2 Christmas Performance
10.12.2024	9:30am & 2:00pm UKS2 Christmas Performance
11.12.2024	9:30am Reception Christmas Performance
12.12.2024	9:30am Reception Christmas Performance
12.12.2024	2:00pm KS1 Christmas Performance
12.12.2024	Christmas Dinner/Jumper Day
13.12.2024	9:30am KS1 Christmas Performance
16.12.2024	UKS2 Christmas Party
17.12.2024	LKS2 Christmas Party
18.12.2024	Termly Reports Out
18.12.2024	KS1 Christmas Party
19.12.2024	Reception Christmas Party
20.12.2024	Last Day of Term

### Academy Updates

**In support of Children in Need, Wrenthorpe Academy and Pre-School raised a fantastic £297.37! Thank you for your support!**



# Class News Reception/Key Stage 1

## Reception (Mrs Shute and Miss Brzostowska)

In Reception we have put our learning from last week to practice by creating our own Christmas cards using triangles and circles. The children have loved exploring the snow and ice outside and predicting changes in the environment. They have continued to discover features of traditional tales and loved watching the Snow White pantomime.

## 1C (Miss Carter)

In 1C this week, we have made great progress with our addition skills within 10. The children have really enjoyed working practically to solve problems and write corresponding number sentences. We have also looked closely at the important role Samuel Pepys played in The Great Fire of London.

## 1/2P (Miss Peden)

This week in 1/2P we have been reading Molly McDrew and the Great Fire of London and have been using our magic 5 knowledge to write about what we know. In RE this week we have been learning about the five pillars of Islam and how Muslims show up as their best selves.

## 2C (Mrs Carter)

This week the children in 2C have been focusing on addition and subtraction in Maths. They have been learning to add and subtract across tens. In English, we have been looking at The Baker's Boy and the Great Fire of London.



# Class News Lower Key Stage 2

**3/4R**

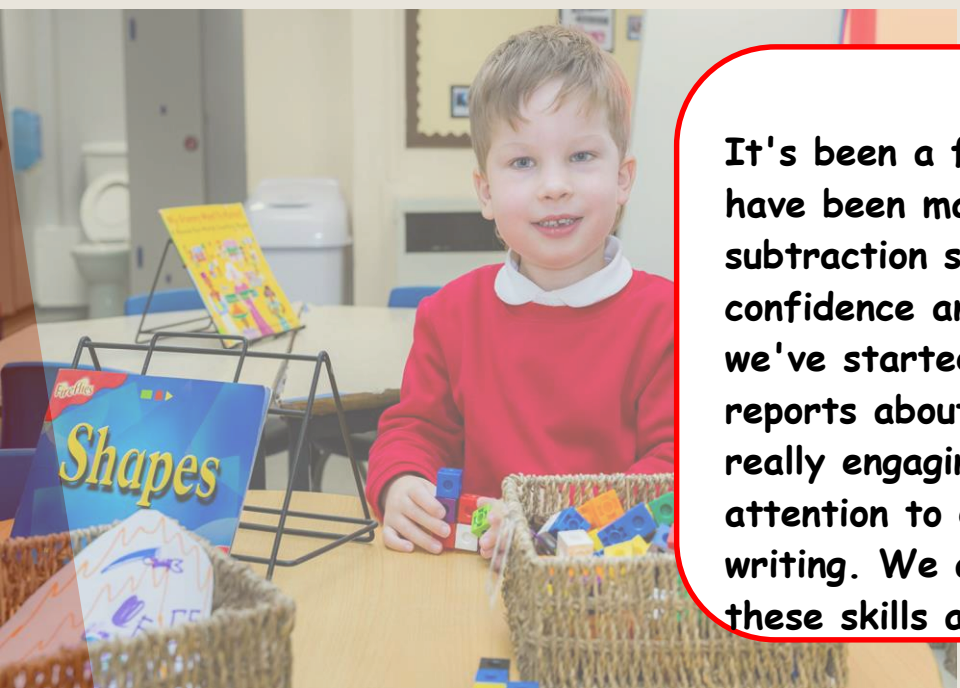
3/4R have had another great week. The children have started writing their Non-Chronological reports and have demonstrated their grammatical knowledge whilst showing some great creativity. In PE, they have continued working on their skills in gymnastics and in maths we have continued developing their subtraction skills. Keep it up!

**3/4C**

It has been another busy week in 3/4C. The children have made excellent progress with their understanding of subordinate clauses in Writing and are applying these skills to our non-chronological reports. In Computing, we began to learn about animation and made miniature flipbooks to improve our understanding. Well done everyone!

**3/4PW**

It's been a fantastic week of learning! The children have been making great progress with their subtraction skills in Maths, showing increased confidence and accuracy. In our writing lessons, we've started drafting our Non-Chronological reports about the Viking Age, and the children are really engaging with the topic. Their creativity and attention to detail are shining through in their writing. We are excited to continue developing these skills and can't wait to see the final pieces.



# Class News Upper Key Stage 2

**5/6M**

It's been a great week in 5/6M. The children have excelled in their learning making good progress with their diary entry and arithmetic skills. In our writing lessons, the children learnt what a relative clause is and applied it in their diary entry to add additional information. In Maths, we learnt about common multiples and factors and used common factors to simplify fractions. Well Done, 5/6M.

**5/6P**

We've had another super week in 5/6P. Children have worked incredibly hard in English lessons and have written fantastic first drafts of their diary entries, in role as Arthur or Maudie. In art, children have been studying the work of Marston and his depictions of the Antarctic landscape. Well done, 5/6P.

**5/6 Mc**

This week, we've been learning about relative clauses and creating our own inspired by our class text, Brightstorm.

In Science, we explored how exercise affects our heart rates by doing some fun experiments.

Well done to everyone for your hard work!





# Time to Celebrate!!!

Avalyn M- Octopus 2 Swimming Certificate  
Reuben G- Learn to Swim 2 Certificate  
Poppie M-R- Gymnastics medal  
Gracie T- 10m Swimming Certificate  
Chloe B- Rainbows Influence Badge  
Jameson L- Signed Ossett FC Programme  
Ronnie W- Football Training Medal  
Avia U-T - Two dance trophies  
Layla I- Gymnastics Award  
Amelia T- Player of the Match (football)







Where Everyone Is Valued



## Wrenthorpe Academy

### Open Evenings:

**Monday 11<sup>th</sup> November 2024**

**&**

**Monday 25<sup>th</sup> November 2024**

Join us at 4:00pm and enjoy time exploring our Reception setting.

Meet and speak to staff and ask any questions.



Imperial Avenue,  
Wrenthorpe,  
Wakefield,  
WF2 0LW

Any queries please contact the office on:  
01924 378001



WATERTON  
PRIMARY SCHOOL